

2 VIOLINO SECONDO

SONATA

Allegro *Largo*



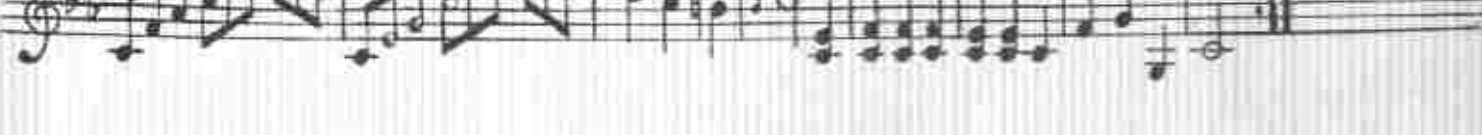
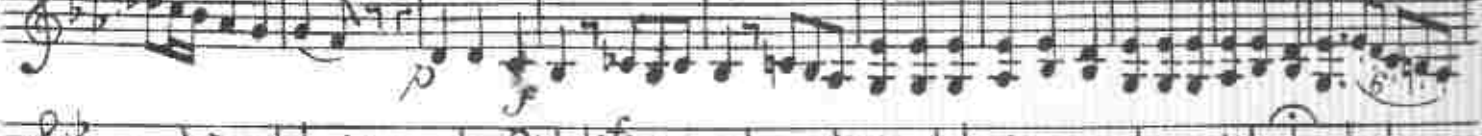
pp *Con Sordini*



Andante



VIOLINO SECONDO



VIOLINO SECONDO

SONATA II

Adagio

The Adagio section consists of 15 staves of music. It begins with a treble clef, a key signature of two flats (B-flat and E-flat), and a common time signature (C). The tempo is marked *Adagio*. The music features a variety of dynamics, including *p* (piano), *f* (forte), *pp* (pianissimo), and *ff* (fortissimo). Performance instructions such as *Dolce* and *Poco f* are included. The notation includes complex rhythmic patterns, slurs, and trills. The section concludes with a double bar line.

Allegro

The Allegro section consists of 2 staves of music. It begins with a treble clef, a key signature of two flats (B-flat and E-flat), and a common time signature (C). The tempo is marked *Allegro*. The music features a variety of dynamics, including *p* (piano) and *f* (forte). The notation includes complex rhythmic patterns, slurs, and trills.

VIOLINO SECONDO

SONATA III

Allegro Moderato

Adagio

Dolce

VIOLINO SECONDO

Presto assai

Dolce

f *p* *f* *p* *f* *p*

p

VIOLINO SECONDO

SONATA VI

Allegro

The first movement, *Allegro*, is written in 2/4 time. It begins with a treble clef and a common time signature. The score consists of ten staves of music. The first staff contains the initial melodic line, followed by a series of sixteenth-note passages in the second and third staves. The fourth and fifth staves feature more complex rhythmic patterns, including triplets and sixteenth-note runs. The sixth and seventh staves continue with similar rhythmic motifs, while the eighth and ninth staves show a change in texture with more sustained notes and dynamic markings. The movement concludes with a final cadence on the tenth staff.

The second movement, *Adagio*, is written in 3/4 time. It begins with a treble clef and a 3/4 time signature. The score consists of two staves of music. The first staff features a slow, melodic line with a dynamic marking of *p*. The second staff provides a harmonic accompaniment with a dynamic marking of *f*. The movement is characterized by its slow tempo and expressive phrasing.

VIOLINO SECONDO

13

Presto

Ten

Fin